

CH. 4 SOLUTIONS

Sect 4.1

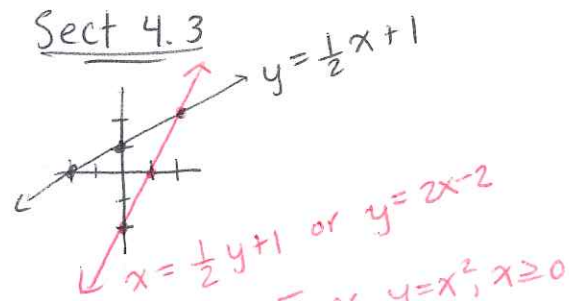
- (2) No
- (4) Yes ; $D: [-2, 6]$, $R: [-1, 3)$
- (6) Yes ; $D: \mathbb{R}$, $R: [-2, 2]$
- (8) $y = \sqrt[3]{1-x^3}$ Explain
- (10) a) $t \neq -3$
b) $t \neq -3, -2$
c) $t \neq 0, \pm 3$
- (12) a) $t \geq 0$, $f(t) \geq 0$, 0
b) $t \leq 9$, $g(t) \geq 0$, 9
c) $D: [-3, 3]$, $R: [0, 3]$, ± 3
- (14) $g(x) \leq 4$; zeros = 1, 5
- (16) \mathbb{R} ; zeros = 4, -1, 1
- (18) $g(u) \leq 0$; zeros: $u \geq 3$

Sect 4.2

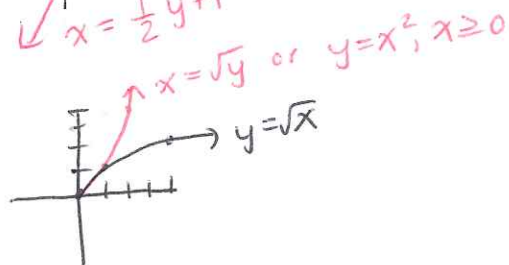
- (6) $x^3 - x$
- (8) $x^2 + x + 1$ for $x \neq 1$
- (10) a) 6
b) $x^3 - 2$

Sect 4.3

(8)



(12)



(20)

$|xy| = 12$
x-axis symmetry, y-axis, origin, and line $y=x$ symmetry (show all 4 tests)

